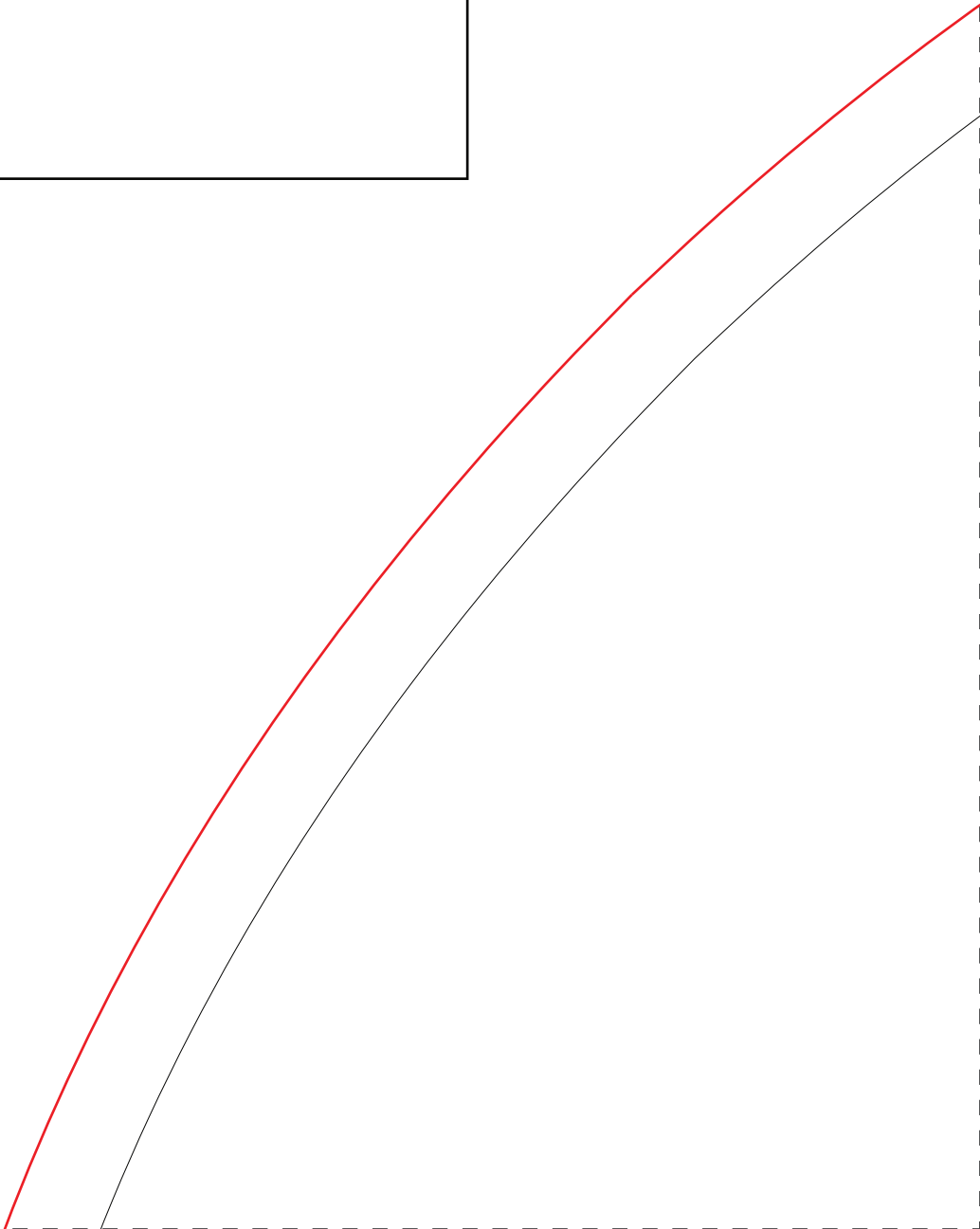
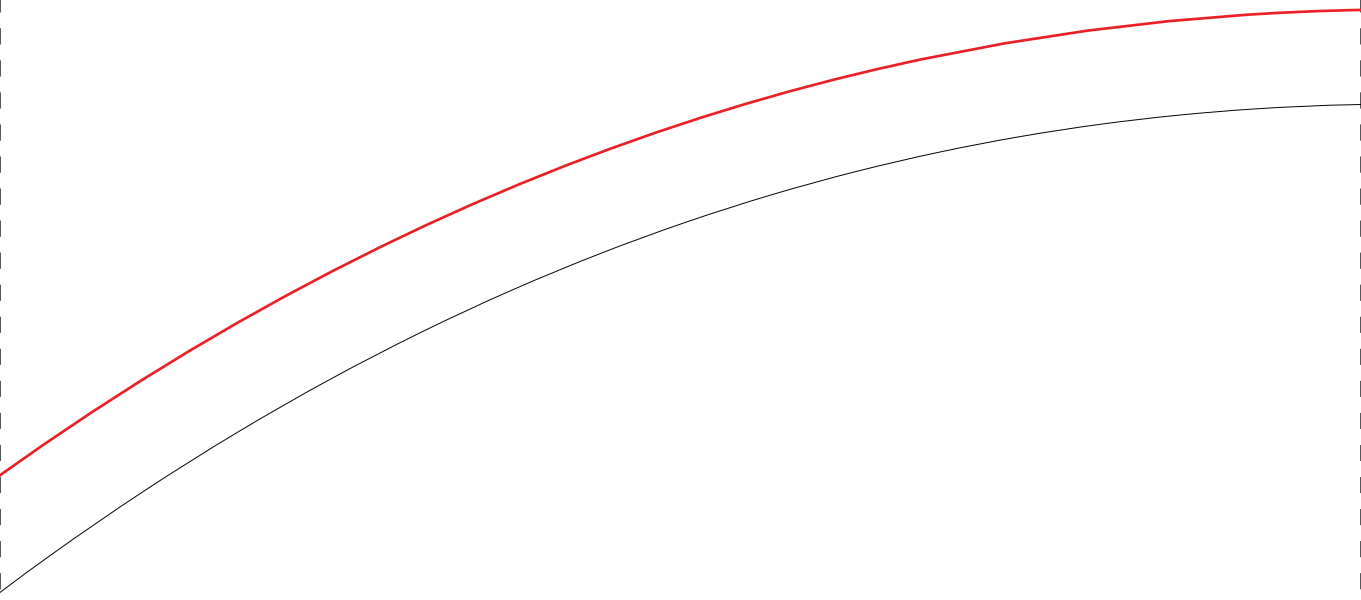




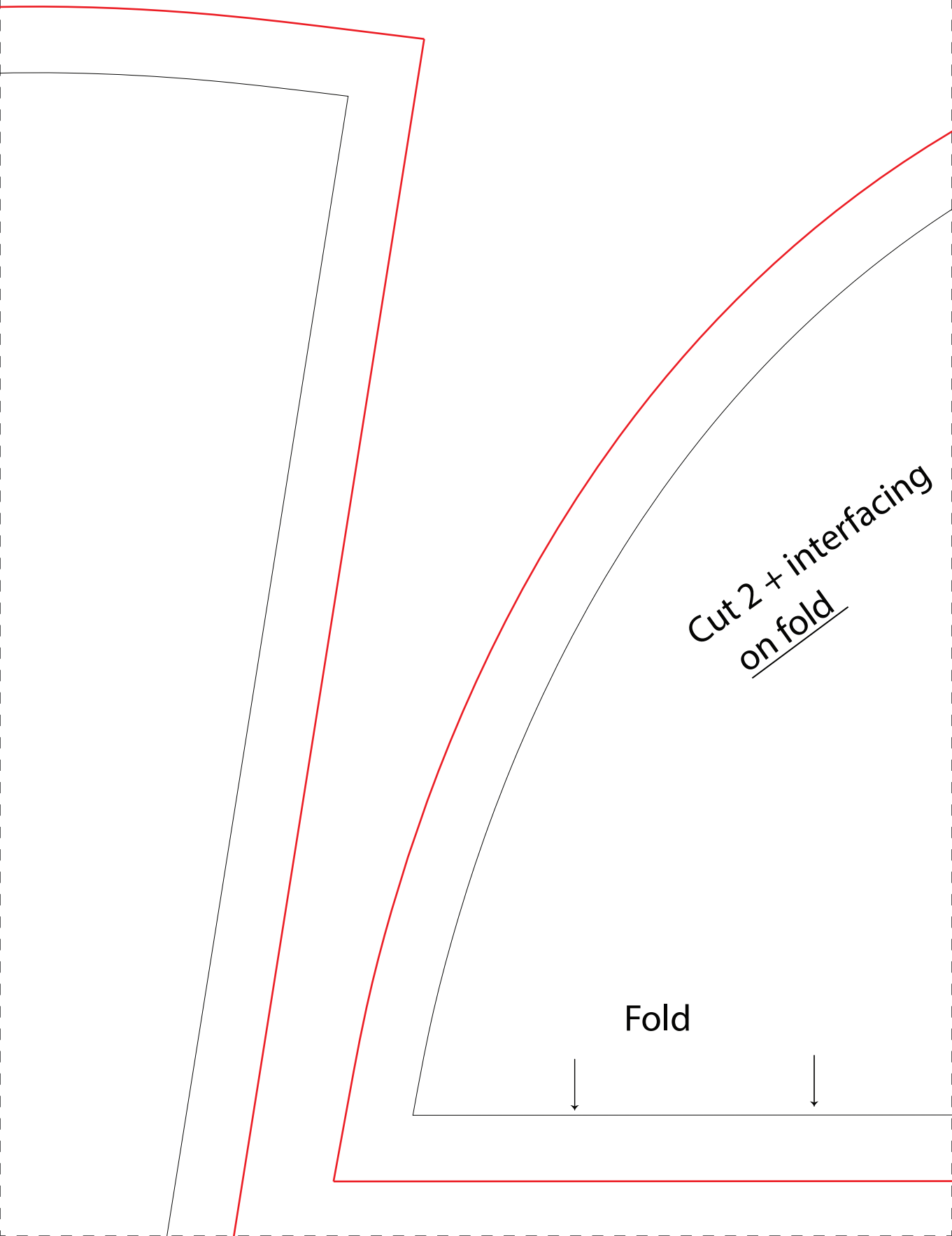
Where to cut

Where to stitch

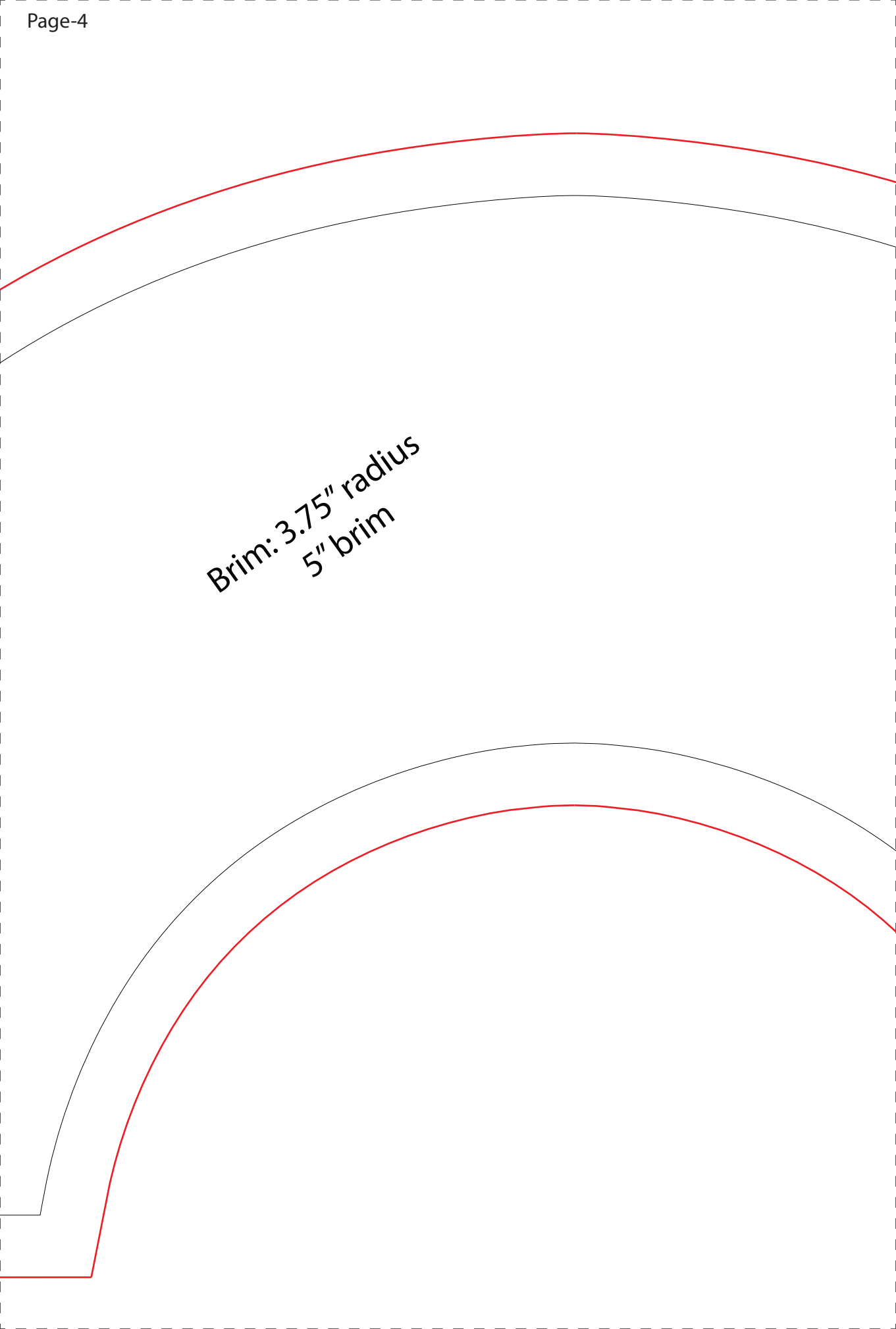




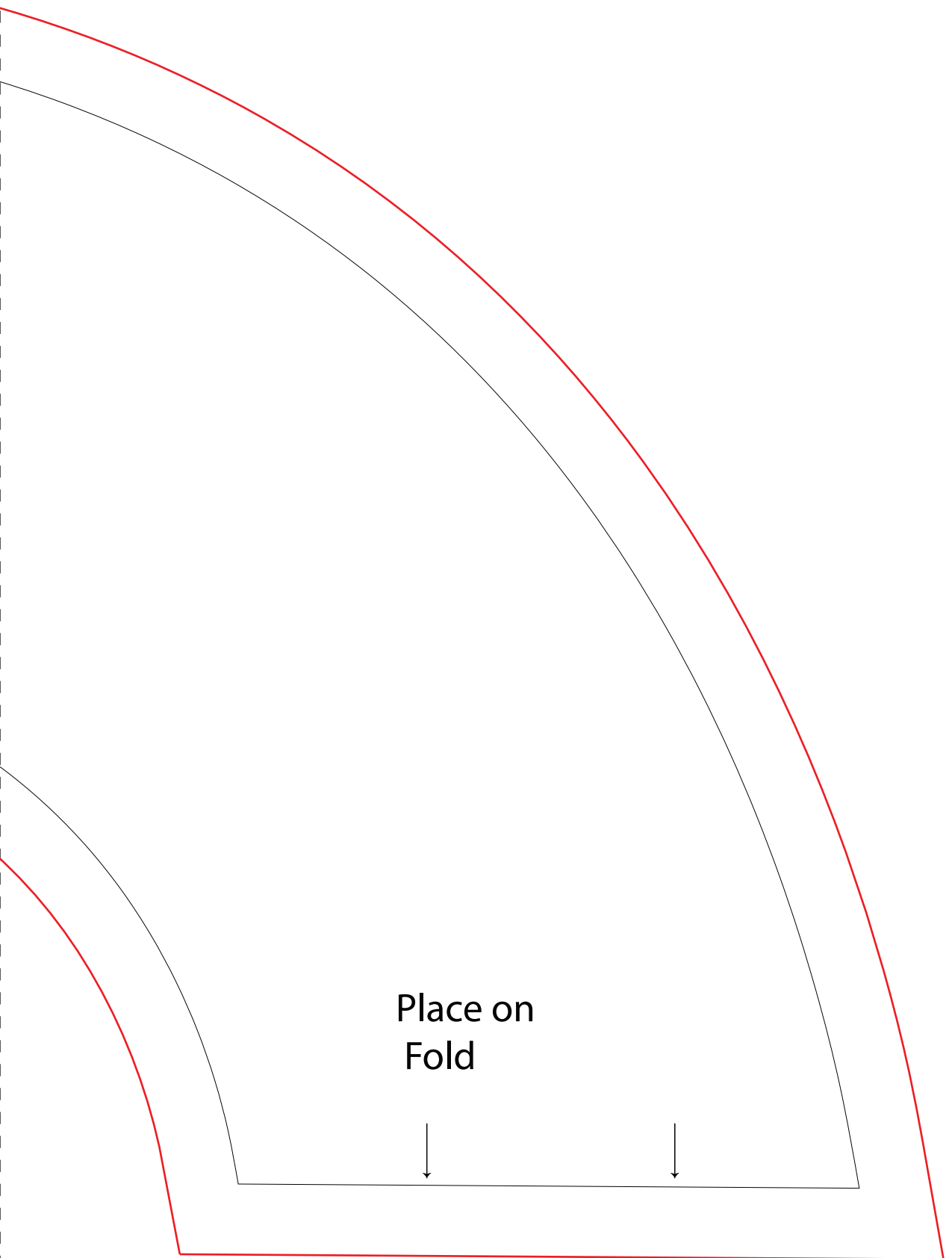
Cut 2
(or 1+ heavy interfacing)

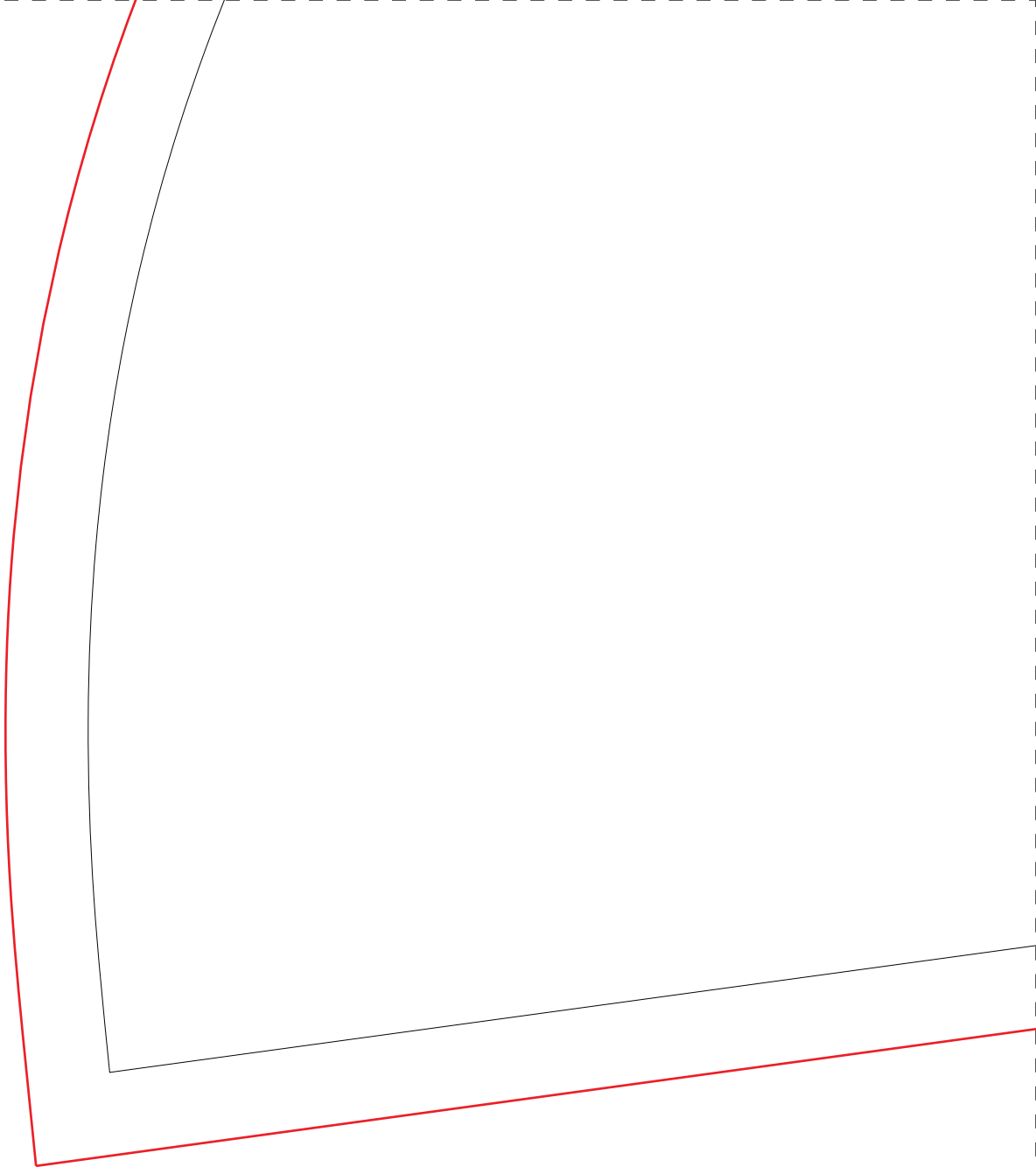


Brim: 3.75" radius
5" brim



The diagram shows a circular object with concentric arcs. The outermost arc is red, and the inner arc is black. The text 'Brim: 3.75" radius' and '5" brim' is written in the center of the circle. The arcs are centered at the bottom left of the page.





WITCH HAT

